

THE MICHIGAN MARITIME MUSEUM

EVENT PLANNING GUIDE



MICHIGAN MARITIME MUSEUM
260 DYCKMAN AVENUE
SOUTH HAVEN, MICHIGAN 49090



WHERE MEMORABLE EVENTS SUPPORT A MEANINGFUL MISSION

Located in the heart of South Haven's vibrant Maritime District, the Michigan Maritime Museum offers a one-of-a-kind setting along the shores of Lake Michigan, South Haven's harbor, and the Black River. As a premier destination for preserving and sharing Great Lakes maritime history, our 5.5-acre indoor-outdoor campus features multiple exhibit buildings that bring the region's rich cultural heritage to life. From unique venues to our historic fleet, the Museum delivers a truly immersive experience—inviting guests to not just learn history, but step aboard and be part of it.

When you host your event with us, you'll create unforgettable memories while directly supporting the Museum's mission.



The campus features a variety of indoor and outdoor waterfront venues, complete with top-of-the-line AV support—ideal for meetings, conferences, seminars, weddings, showers, and celebrations. Flexible spaces accommodate groups from three to 300+ guests, the perfect setting for any occasion.

POLICIES

The Michigan Maritime Museum offers a unique setting on an active working waterfront. Unless a full campus rental is reserved, the Museum will remain open to the public, and events will take place alongside general visitor activity. Guests may experience shared parking, ambient noise, and ongoing maritime operations. For those desiring an exclusive and fully private environment, a full campus rental provides the most elevated experience.

All exhibits, artifacts, images, displays, and vessels on campus are subject to change. The Museum reserves the right to alter, reposition, or remove any portion of the campus or its contents at any time without notice.

The Michigan Maritime Museum holds an exclusive catering agreement. All rentals are required to utilize the Museum's in-house caterer for all food and beverage service, including both non-alcoholic and alcoholic beverages. Wedding cakes are the sole exception.

No structures may be erected on museum property without express approval (including tents).

A full museum buyout means you will have exclusive access to all available rentable areas, indoor and outdoor. A second floor buyout gives you exclusive access to the Mike & Linda Winkel and Mike & Sue Smith Maritime Heritage Center's second floor rentable areas.



The Mike & Linda Winkel and Mike & Sue Smith Maritime Heritage Center showcases exceptional craftsmanship and design, with lofted ceilings, abundant natural light, a welcoming fireplace, and sweeping water views. This inviting space offers a refined yet comfortable atmosphere for gatherings of all kinds—from focused business meetings to elegant weddings.

CARMICHAEL VERANDA

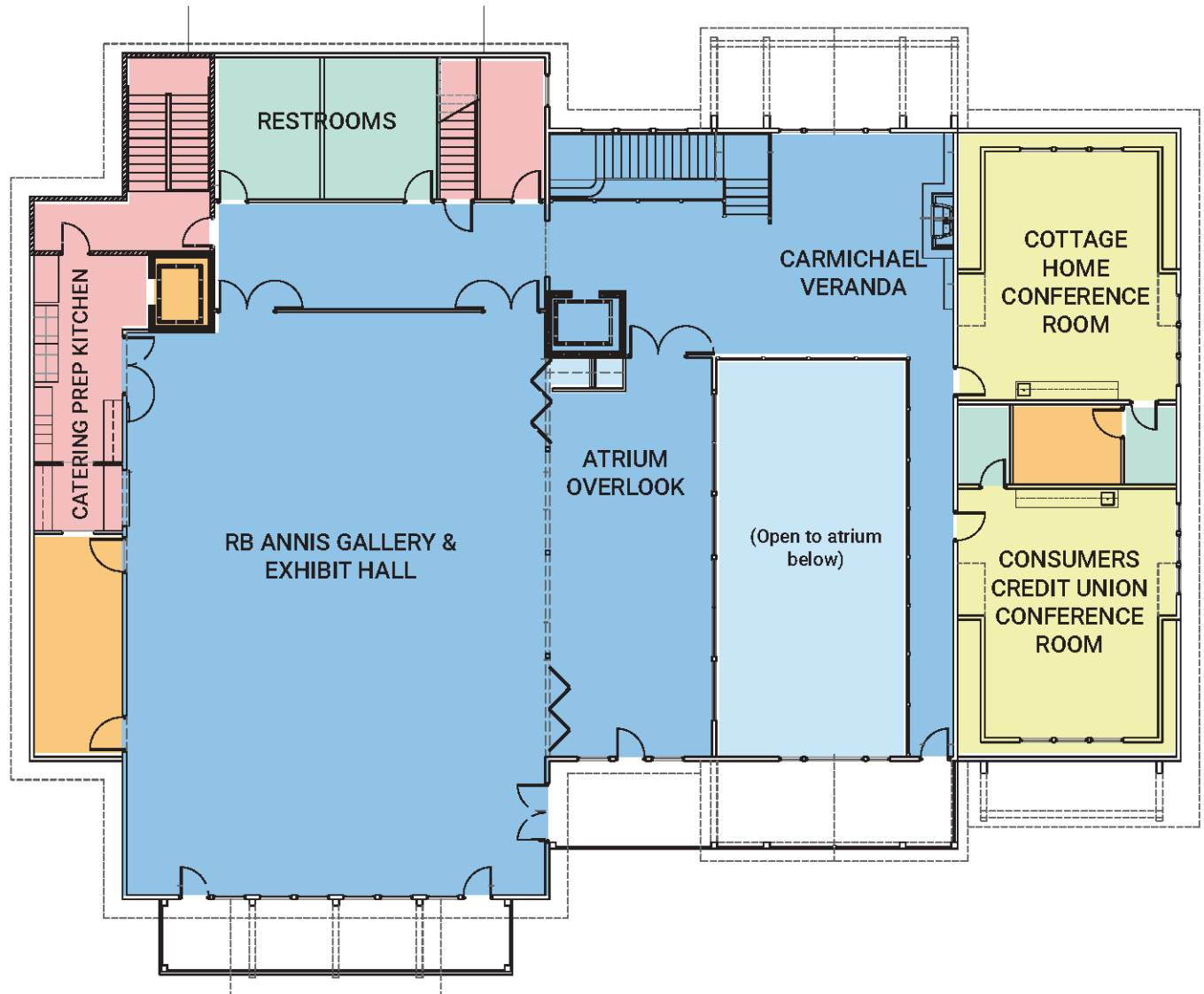
LOCATED ON SECOND FLOOR

Step away from a meeting, take a call, or enjoy a quiet conversation while relaxing by the cozy fireplace in a comfortable, light-filled setting. This inviting communal space is included with a second-floor or full museum campus buyout. Not available as a standalone rental.



MIKE & LINDA WINKEL AND MIKE & SUE SMITH
MARITIME HERITAGE CENTER

SECOND FLOOR SPACES



SECOND FLOOR MARITIME HERITAGE CENTER BUYOUT INCLUDES EXCLUSIVE ACCESS TO:

- Consumers Credit Union Conference Room
- Cottage Home Conference Room
- Carmichael Veranda
- R.B. Annis Gallery & Exhibit Hall
- Atrium Overlook

R.B. ANNIS GALLERY & EXHIBIT HALL

Featuring floor to ceiling harbor views and direct access to a private outdoor balcony, this expansive space is ideal for larger events, weddings, exhibitions, conferences, and business meetings.

- 42' x 72' versatile event space
- Banquet seating for up to 150 guests (up to 180 with Atrium Overlook combination)
- Theater-style seating for up to 300 guests (up to 375 with Atrium Overlook combination)
- Attached catering prep kitchen
- Two 98" video screens with integrated presentation and conferencing capabilities
- Access to both private and shared balcony areas



ATRIUM OVERLOOK

An intimate setting for private gatherings or business functions. The space offers water views, balcony access, and a striking overlook of the Deary-Mead Family Grand Atrium below.

- 38' x 17' event space
- Banquet seating for up to 30 guests
- Theater-style seating for up to 94 guests
- 82" video screen with integrated presentation and conferencing capabilities
- Access to shared balcony

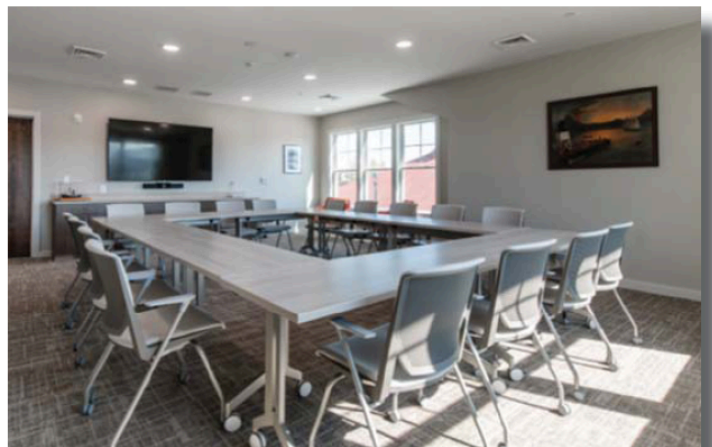
CONSUMERS CREDIT UNION CONFERENCE ROOM & COTTAGE HOME CONFERENCE ROOM

Ideal for business meetings, planning sessions, work retreats, and small group gatherings, these private meeting rooms offer a professional and comfortable setting.

- 16' x 20' private meeting spaces
- 82" video screen with integrated presentation and conferencing capabilities
- Waterfront views (Consumers Credit Union Room only)
- Private en-suite restroom
- Capacity: up to 20 guests



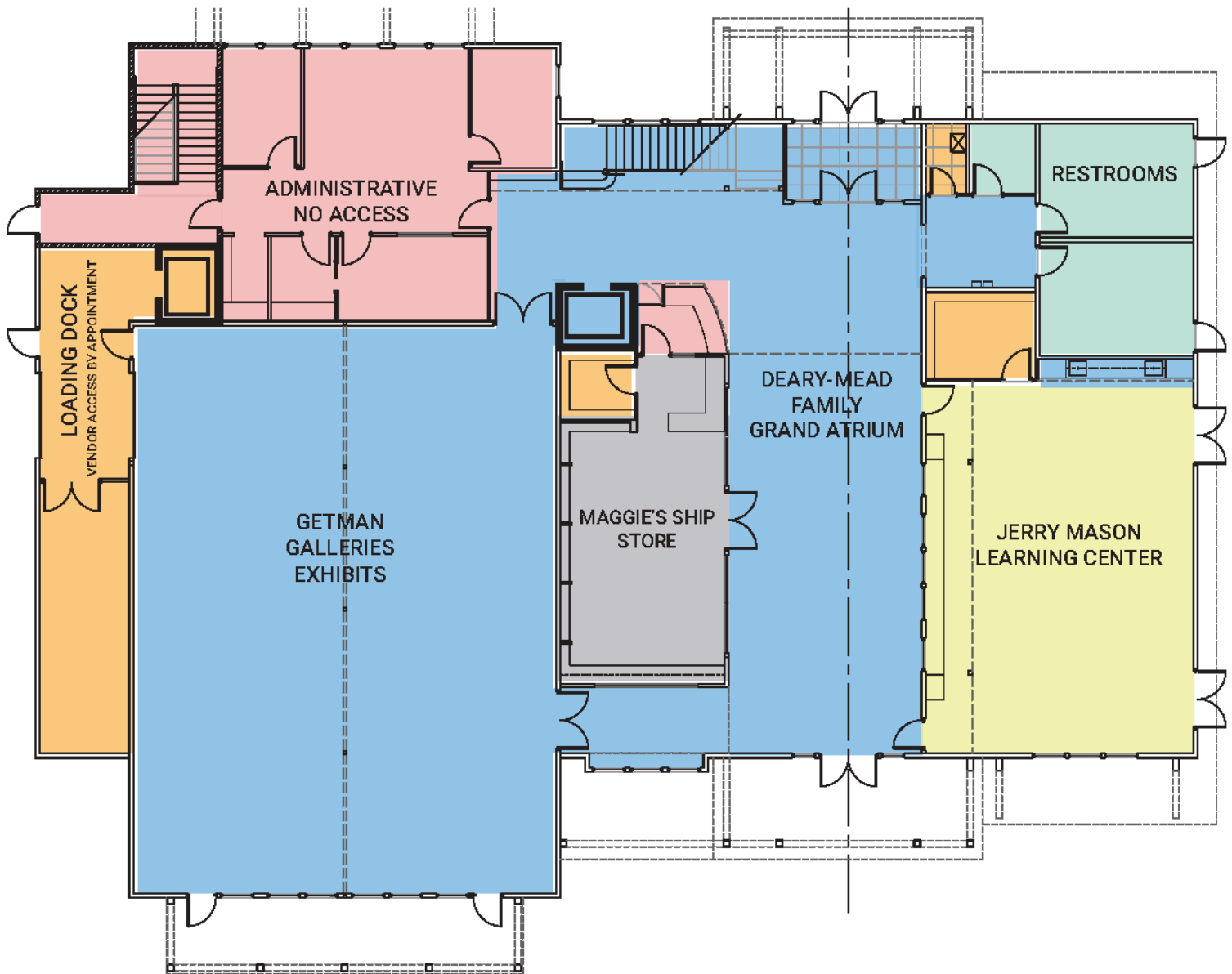
COTTAGE HOME CONFERENCE ROOM



CONSUMERS CREDIT UNION CONFERENCE ROOM

MIKE & LINDA WINKEL AND MIKE & SUE SMITH
MARITIME HERITAGE CENTER

MAIN LEVEL SPACES



AN EXPERIENCE BEYOND THE EVENT

Hosting your event at the Michigan Maritime Museum offers more than a beautiful setting—it offers a sense of place. Set along the harbor, your guests are surrounded by the stories of the Great Lakes, with access to a range of thoughtfully curated exhibits. It's an atmosphere that invites discovery, sparks conversation, and elevates your event into something truly distinctive and memorable.

AVAILABLE ONLY WITH A FULL MUSEUM BUYOUT



JERRY MASON LEARNING CENTER

Located directly off the Deary-Mead Family Grand Atrium, this versatile space is ideal for classes, workshops, presentations, group functions, seminars, and children's celebrations.

- 26' x 50' multi-function education space
- Convenient access to both indoor exhibits and outdoor campus areas
- Classroom seating for up to 40 guests
- Theater-style seating for up to 80 guests
- 120" projector screen with integrated conferencing and presentation capabilities

DEARY-MEAD FAMILY GRAND ATRIUM

A striking two-story atrium with sweeping views through to the harbor, offering a bright and inviting setting for networking and entertaining. Ideal for both social and business gatherings.

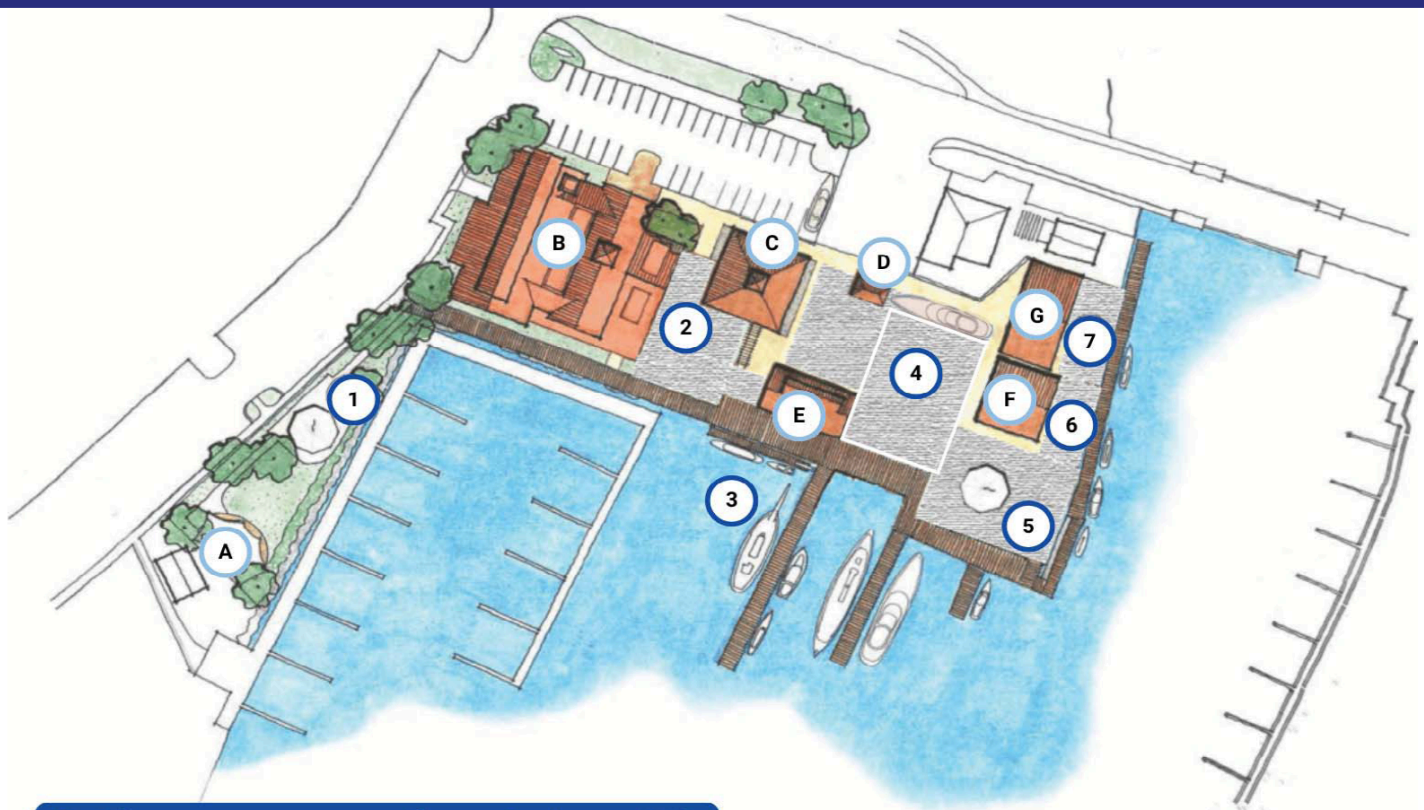
- 26' x 75' dynamic open space
- Lounge seating for up to 20 guests
- Accommodates high-top table setups for up to 40 guests (tables not included)



FULL MUSEUM CAMPUS BUYOUT INCLUDES:

All indoor and outdoor exhibits, as well as exclusive access to campus and all rentable locations.

OUTDOOR EVENT SPACES



Outdoor spaces open for private rentals

- 1 - **Ruth Wiser Discovery Tent** 32' round canopy with seating for up to 50 people
- 2 - **MHC Patio** Reception capacity for up to 40 people
- 3 - **Friends Good Will** Available for private sailing charters or dockside receptions for up to 28 people
- 4 - **Frizzo Allkins Family Event Grounds** 40' x 70' gravel open space with seating for up to 300 people
- 5 - **Bosgraaf Point** 32' round Visit South Haven canopy with seating for up to 50 people
- 6 - **Bergman Courtyard** 15' x 40' gravel river frontage with reception capacity for up to 30 people
- 7 - **deBest Family Courtyard** 15' x 40' gravel river frontage with reception capacity for up to 30 people

Museum exhibits and campus buildings

A - Evelyn S. Fishing Tug The museum's first exhibit, this historic working vessel is open to board and offers a hands-on glimpse into Great Lakes commercial fishing life.

B - The Mike & Linda Winkel and Mike & Sue Smith Maritime Heritage Center The heart of the museum campus, this welcoming space features core exhibits, galleries, and year-round programming that bring Great Lakes maritime history to life.

C - Van Oort Coast Guard Boathouse Home to the museum's U.S. Coast Guard Motor Lifeboat, this space highlights the bravery, technology, and lifesaving missions of the Coast Guard on the Great Lakes.

D - Life-Saving Service Building Explore the early days of maritime rescue on the Great Lakes, where courageous crews braved the elements to save lives along the shoreline.

E - Padnos Boat Shed A working waterfront space where historic vessels are maintained and restored, offering a behind-the-scenes look at the craft of preserving maritime heritage.

F - McClendon Small Craft Barn Home to a diverse collection of outboard motors and small watercraft from many eras, this space highlights the evolution of recreational and working boats.

G - Harris Commercial Fishing Building Dive into the history of Great Lakes commercial fishing through immersive exhibits, oral histories, and artifacts that bring the industry and its people to life.

MichiganMaritimeMuseum.org/Events/Host
events@mimaritime.org
(269) 637-8078





MAY–OCTOBER

PRICING

- CONSUMERS CREDIT UNION CONFERENCE ROOM
- COTTAGE HOME CONFERENCE ROOM
- R.B. ANNIS GALLERY & EXHIBIT HALL **Friday–Saturday**.....
..... **Sunday–Thursday**.....
- ATRIUM OVERLOOK
- SECOND FLOOR BUYOUT
- BOSGRAAF POINT
- RUTH WISER DISCOVERY TENT
- FULL MUSEUM BUYOUT

10AM–5PM	Additional Hours
\$500	\$150/hr
\$500	\$150/hr
\$10,000	\$500/hr
\$5,000	\$400/hr
\$750	\$150/hr
\$12,500	\$500/hr
\$3,000	\$400/hr
\$3,000	\$400/hr
\$25,000	\$1,000/hr

Inquire about adding on-water experiences or dockside tours.
 Giftshop discounts available for wedding favors, corporate gifts, etc.

POLICIES

Keel Club Members get 20% off on event space rentals after one year of membership or a two year fully paid membership commitment.

Corporate members get 10% off event space rental (date exclusions apply)

When calculating time outside of normal operating hours, round up to the nearest half hour.

Price and terms subject to change without notice.



MichiganMaritimeMuseum.org/Events/Host
events@mimartime.org
 (269)637-8078



NOVEMBER-APRIL

PRICING

- CONSUMERS CREDIT UNION CONFERENCE ROOM
- COTTAGE HOME CONFERENCE ROOM
- R.B. ANNIS GALLERY & EXHIBIT HALL **Friday-Saturday**.....
..... **Sunday-Thursday**.....
- ATRIUM OVERLOOK
- SECOND FLOOR BUYOUT
- FRIZZO & ALLKINS FAMILY EVENT GROUNDS
- FULL MUSEUM BUYOUT

10AM-5PM	Additional Hours
\$500	\$150/hr
\$500	\$150/hr
\$5,000	\$400/hr
\$2,500	\$350/hr
\$1,500	\$150/hr
\$7,500	\$500/hr
\$5,000	\$400/hr
\$20,000	\$1,000/hr

Giftshop discounts available for wedding favors, corporate gifts, etc.

POLICIES

Keel Club Members get 20% off on event space rentals after one year of membership or a two year fully paid membership commitment.

Corporate members get 10% off event space rental (date exclusions apply)

When calculating time outside of normal operating hours, round up to the nearest half hour.

Price and terms subject to change without notice.



MichiganMaritimeMuseum.org/Events/Host
events@mimaritime.org
(269)637-8078